



## MA SERIES

### Diaphragms absolute pressure gauges

- ◆ watertight casing;
- ◆ NS 100 - 150;
- ◆ ranges included between 60 mbar and 2,5 bar abs.

The absolute pressure gauges are employed for those applications that require to measure the pressure without depending from the fluctuations of the atmospheric pressure. This function is carried on with an vacuum chamber used as a reference.



made in  
ITALY



PED 2014/68/EU  
ATEX 2014/34/EU



## TECHNICAL FEATURES

- **Nominal sizes**
  - 100 e 150.
- **Models**
  - MA 325:  
ranges included between 0,6 and 2,5 bar absolute;
  - MA 425:  
ranges included between 60 and 400 mbar absolute;
- **Casing**
  - case and ring in AISI 304 stainless steel (AISI 316 on request - option V61) with bayonet bezel.
- **Protection degree (according to EN 60529)**
  - IP 55 standard - dry execution;
  - IP 67 not fillable (option V72).
- **Window**
  - glass;
  - laminated safety glass (on request - option V17).
- **Blow out device**
  - blow out plug.
- **Pressure connection (according to EN 837)**
  - AISI 316L stainless steel threaded G 1/2 B (1/2 Gas or BSP) or 1/2-14 NPT EXT (1/2 NPT
- **Flange process connection on request**
- **Pressure element**
  - AISI 316Ti stainless steel diaphragm.
- **Movement**
  - stainless steel.
- **Ranges (according to EN 837)**
  - **Scale ranges for pressure values between 60 mbar and 2,5 bar abs:**
    - see table B1 at page P06;
    - (divisions as per table C1 at page P04);
    - other graduations not normalized for single or double range (on request).
  - **Unit of pressure:**
    - mbar, bar, kPa, kg/cm<sup>2</sup> and psi for single or double range.
  - **Scale angle:**
    - 270 ° (180 ° for range 0÷60 mbar).
- **Pointer**
  - aluminium with micrometer adjustment.
- **Dial**
  - white aluminium with black figures  
(for dial modifications see available options).
- **Accuracy (according to EN 837)**
  - class 1,6 ( $\pm 1,6\%$  of full scale deflection).
  - note 1:** accuracy class is not affected by atmospheric pressure changes.
  - note 2:** accuracy indicated on the pressure gauge does not consider the interference of on eventually applied electric contact.
- **Ambient temperature**
  - -20÷+60°C.
- **Operating temperature**
  - max 120°C.
- **Thermal drift**
  - out of the optimum ambient temperature values included within +15 ÷ +25°C, the thermal drift affects the instruments accuracy as follows:
  - 0,3% every 10°C for model MA 325;
  - 0,5% every 10°C for model MA 425.

## APPLICATIONS

- **Electric contact (see CE series)**
  - the instrument can be identified by the number of the
- chosen model, adding the reference of the switching action as shown in tables of CE series.  
(identification CE...)

OPTIONS

- **Window**  
different from standard:
    - laminated safety glass. (identification V17)
  - **Degreasing for oxygen service** (identification V31)
  - **Threaded pressure connection**  
different from standard. (identification V42)
  - **Changes to the dial**
    - serial number; (identification V50)
    - specific dial; (identification V51)
    - red mark; (identification V52)
    - writings; (identification V53)
    - TAG number; (identification V54)
- dial without logo; (identification V56)
  - double logo (Fantinelli + customer); (identification V57)
  - customer's logo. (identification V58)
  - **AISI 316 stainless steel case and ring**  
as alternative to AISI 304 stainless steel. (identification V61)
  - **IP 67 casing**  
not fillable. (identification V72)
  - **Metal tag plate**  
AISI 316 stainless steel for tag number. (identification V82)

DOCUMENTATION

- **Fantinelli calibration certificate class 1,6**  
pressurising pressure. (identification V93)
  - **Complementary documents**
    - o certificate of compliance with the order EN 10204 2.2.
    - o technical documentation including;
- drawings and technical informations ;
  - installation and maintenance instructions.
  - o inspection and test certificate EN 10204-3.1.
  - o material certificates.
  - o PED declaration.
  - o ATEX declaration (II 2 G/D).

TECHNICAL INFORMATIONS

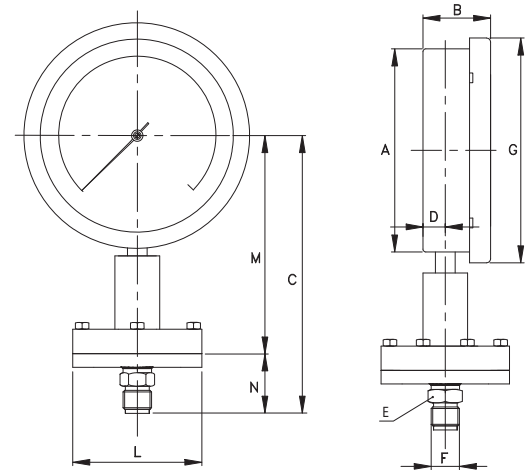


Table MA 325

DN	A	B	C	D	E	F	G	H	I	L	M	N	Ø fori 120°	PESO ~ kg
100	103	50	183	16,5	22	1/2	118			100	139	44		2,30
150	150	50	207	16,5	22	1/2	166			100	163	44		2,63

Absolute pressure gauge ranges included between 0,6 and 2,5 bar.

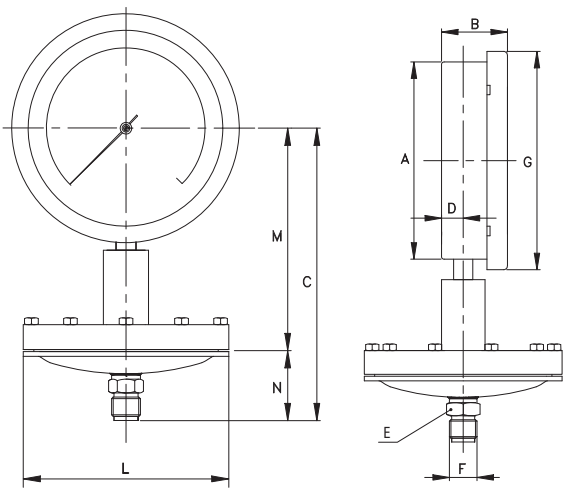


Table MA 425

DN	A	B	C	D	E	F	G	H	I	L	M	N	Ø fori 120°	PESO ~ kg
100	103	50	188	16,5	22	1/2	118			165	139	49		5,80
150	150	50	212	16,5	22	1/2	166			165	163	49		6,13

Absolute pressure gauge ranges included between 25 and 400 mbar.

nota: informations shown in this series may be changed at any time without prior notice.